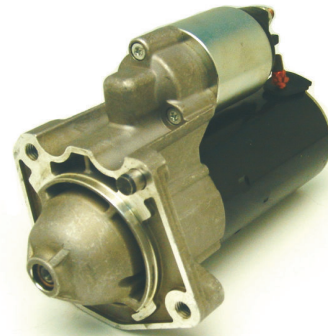




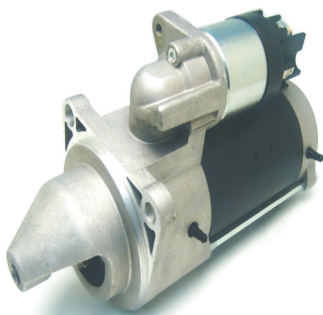
**LES0377**  
**12V / 2.2kW**

CW / 9 Teeth  
Used On: Audi 100 2.5 TDi, 2.0 D & 2.4 D 1990-94  
Audi A6 2.5 TDi Avant & Quattro 1995-97  
VW LT 28-35 2.4 D & LT 40-45 1978-96  
Replaces: Bosch 0-001-218-012, -013, -018  
VAG 039-911-023, -023C, -023CX, -023D



**LES0378**  
**12V / 1.4kW**

CW / 9 Teeth  
Used On: Volvo C70, S40, V50 2.5 L 2005-06  
Volvo C30, C70, S40, V50 2.4 2004-08  
Replaces: Bosch 0-001-108-402  
Volvo 8602924, 8622742



**LES0379**  
**12V / 3.0kW**

CW / 9 Teeth  
Used on: New Holland 4230 & 4220 Ford D 1992-99  
New Holland L60, L65, L75 1996-97  
Replaces: Bosch 0-001-230-007, -010, -023  
New Holland 500325145, 500338952



**LES0387**  
**12V / 1.8kW**

CW / 9 Teeth  
Used On: BMW 1.3 Series 2003-12  
BMW 5, 6, 7 Series X3 & X5 2007->>  
Replaces: Bosch 0-001-115-040, -041, -045, -046  
BMW 12-41-7-794-952, 796-892, -798-035, -798-036



**LES0388**  
**12V / 1.8kW**

CW / 13 Teeth  
Used On: Mercedes C180, C200, C220 2009-13  
Mercedes E220, E250, E300, GLK 200 2009->>  
Replaces: Bosch 0-001-149-400, -401  
Mercedes-Benz 651-906-12-00, -23-00



**LES0383**  
**24V / 5.5kW**

CW / 12 Teeth  
Used On: DAF CF85 MX265, -300, -340 12.9L Dsl 2005->>  
DAF XF105 MX300, -340, -375, -410 12.9L Dsl 2005->>  
Replaces: Bosch 0-001-261-007, -008  
DAF 1826121, STD1418R

All non - Lucas Elektrik A.Ş. numbers and names are for reference only.

For further inquiries: e-mail:marketing@lucaselektrik.com Fax:+90 264 276 8771

[www.lucaselektrik.com](http://www.lucaselektrik.com)