

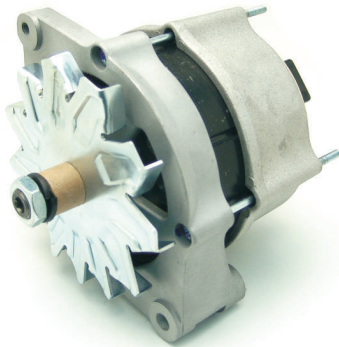
LEA0645
14V / 90A

Used On: Mitsubishi Pajero II 2.5 4WD 1991-2000
Replaces: Mitsubishi MD162964, MD339609
Mitsubishi A3T07483



LEA0689
14V / 150A

Used On: Nissan Cube, Juke, Elavia 1.5Dci 2010->>
Nissan Qasqai 1.5Dci 2007->>
Renault Megane 1.5 2004-2010
Replaces: Nissan 23100-00Q0M
Renault 8200390667, 8200728292



LEA0692
28V / 55A

Used On: Case, Cummins & John Deere Various App
Replaces: 0-120-488-206, -294
Case A187916, AR187916, P941542, P941518P
Cummins 3020678, 3284392, 3920678, 3939028



LEA0698
14V / 140A

Used On: Opel Astra, Vectra 2.0, 2.2 2002-07 &
Opel Signum, Zafira 2.0, 2.2 Dti 2002-05
Replaces: Bosch 0-124-525-030
Opel 13-108-596, 93-174-497



LEA0699
14V / 140A

Used On: Opel Astra & Zafira 2.2 Dti 2002-05
Replaces: Bosch 0-124-525-031
Opel 13-108-597, 93-176-653



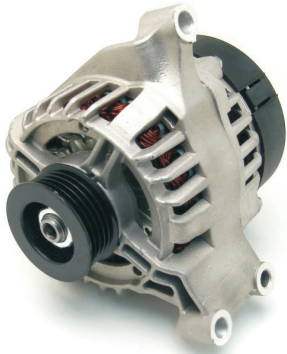
LEA0702
14V / 100A

Used On: Toyota Auris, Yaris 1.3 2009->>
Replaces: Denso DAN1012
Toyota 27060-0Y040, -0Y041

All non - Lucas Elektrik A.Ş. numbers and names are for reference only.

For further inquiries: e-mail: marketing@lucaselektrik.com Fax: +90 264 276 8771

www.lucaselektrik.com



LEA0710
14V / 75A

Used On: Fiat Panda & Punto 1.2 1999->>
Fiat Doblo & Idea 1.4 2005->> & Ford K12 2008->>
Lancia Musa 1.4 2008->>
Replaces: Magnetti Marelli MAN 7002, 63377002
Fiat 46542889, 46843091, 51709133, 51859037



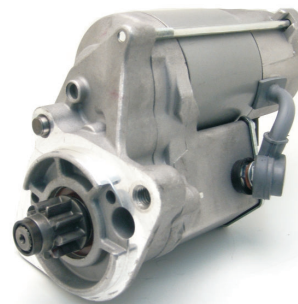
LEA0711
14V / 140A

Used On: VAG Group 1.6, 1.9, 2.0 Diesel &
Fuel Engines 2005->>
Replaces: Bosch 0124-525-039, -050, -066, -067, -091
VAG 06F-903-023A, -023F, 023FX, -023J



LEA0712
28V / 70A

Used On: Case 521D, 521E & Iveco Eurocargo 3.9, 5.9D,
New Holland E175B, E215B
Replaces: Bosch 0-124-555-005
Case 4892318



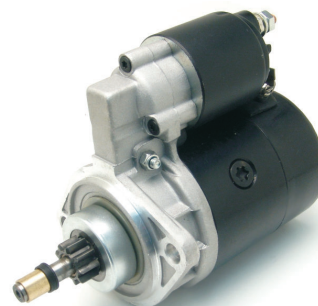
LES0274
12V / 2.0kW

CW / 9 Teeth
Used On: Land Rover Freelander 2.0Tdi 4*4 2000-06
Replaces: Denso228000-7801
Land Rover NAD101500



LES0326
24V / 4.0kW

CW / 9 Teeth
Used On: Mercedes-Benz LK, LN, MK,
NG, Unimog Series 1984-2006
Replaces: Bosch 0-001-213-003
Mercedes-Benz 004-151-86-01



LES0344
12V / 0.7kW

CCW / 9 Teeth
Used On: VW Kaefer 1.2, 1.3 1967-74 & Kaefer 1.6,
Transporter 1.6, 1.7, 1.8 1970-1975
Replaces: Bosch 0-001-211-992, -993
VAG 111-911-023B, -023BT, 211-911-023, 311-911-023

All non - Lucas Elektrik A.Ş. numbers and names are for reference only.

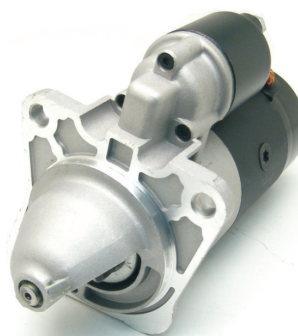
For further inquiries: e-mail:marketing@lucaselektrik.com Fax:+90 264 276 8771

www.lucaselektrik.com



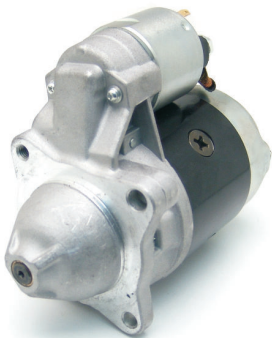
LES0346
12V / 2.3kW

CW / 9 Teeth
Used On: Bomag, JCB, KHD Various Models
Replaces: Bosch 0-001-223-021
KHD 118-2382, -2384, -1781



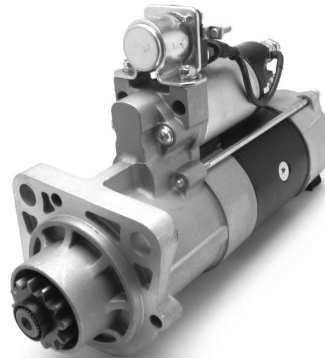
LES0348
12V / 2.2kW

CW / 9 Teeth
Used On: Land Rover Defender, Discovery 2.5D 1990-98
Range Rover 2.5TD 1994-2002
Replaces: Bosch 0-001-218-152, -168
Land Rover ERR5009, NAD10039, NAD100390



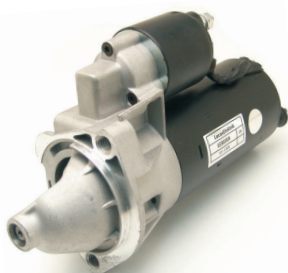
LES0349
12V / 1.1kW

CW / 9 Teeth
Used On: Renault 12 1.3 1969-80 &
Renault 4, 5, Terrific 1.1, 1.4 1978-91
Replaces: Paris Rhone D9E78
Renault 7701351394, 7701499468, 7701499473



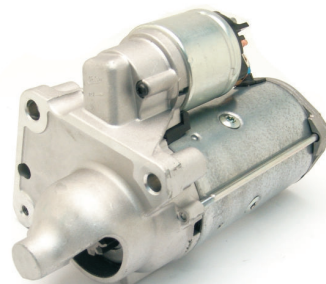
LES0358
12V / 1.1kW

CW / 8 Teeth
Used On: Citroen C1 1.0, Peugeot 107 1.0 &
Toyota Aygo 1.0 2005-08
Replaces: 0-001-107-438, -439
PSA 5802EY, 5802AN, 5802AL



LES0359
12V / 1.8kW

CW / 9Teeth
Used On: Audi 80, 90 1.6D 1986-91
Audi A4, A6, Cabriolet Diesel Engines 1995-2000
Replaces: Valeo D7R33
VAG 068-911-024E, -024EX



LES0363
12V / 2.2kW

CW / 11 Teeth
Used On: PSA Group 1.6 & 2.0 HDi Engines 2004->
Replaces: Valeo TS22E26
PSA 5802AE, -CE, -AF, 9646694080, 9662854180

All non - Lucas Elektrik A.Ş. numbers and names are for reference only.

For further inquiries: e-mail: marketing@lucaselektrik.com Fax: +90 264 276 8771

www.lucaselektrik.com